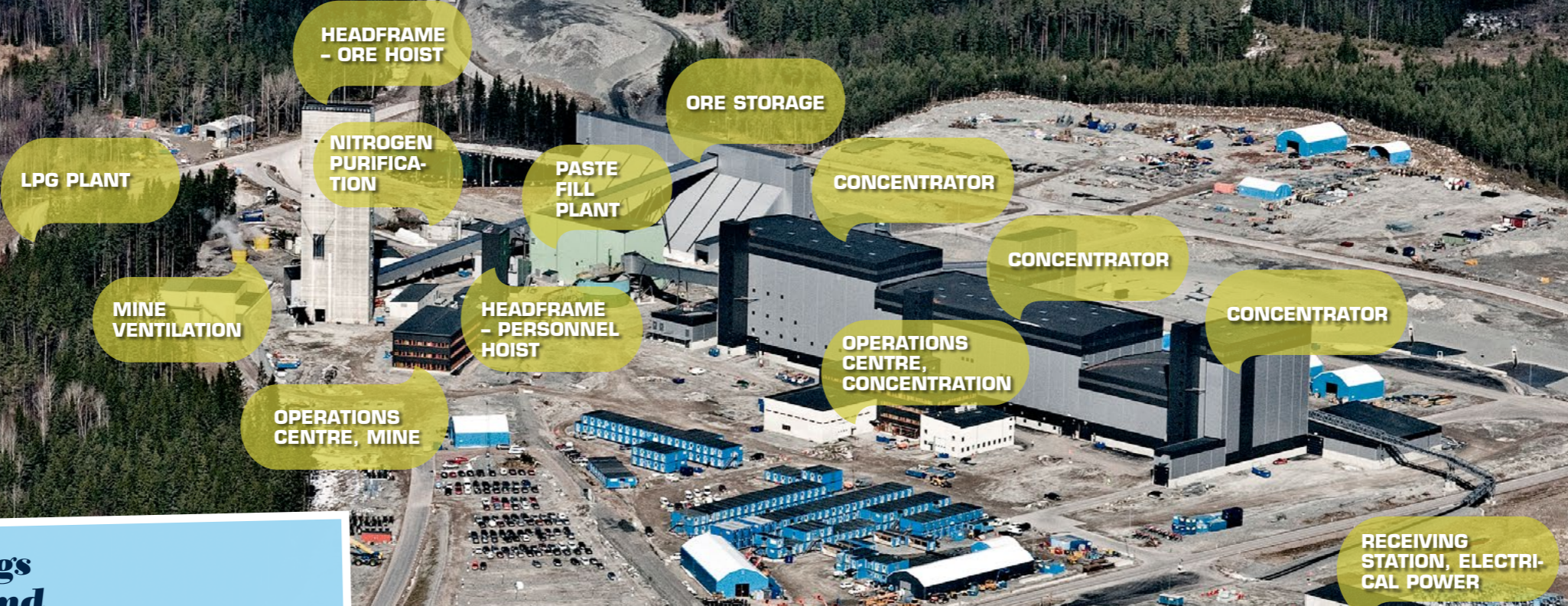


Welcome to Garpenberg!

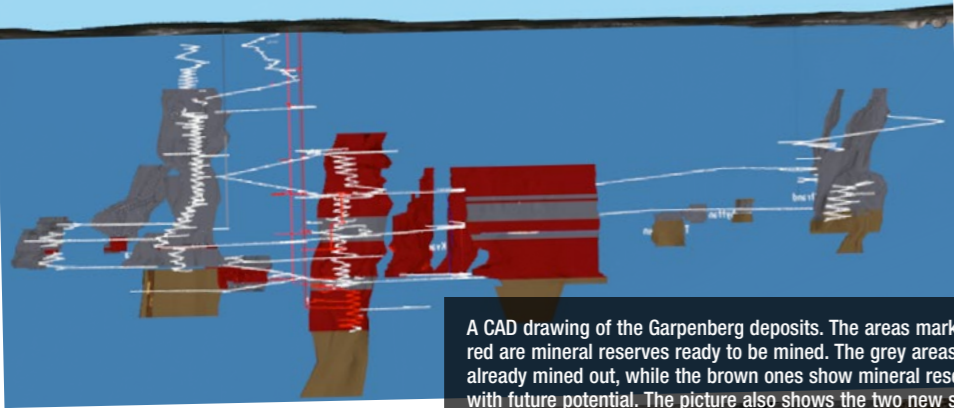


Tailings Management Facility

The TMF, Ryllshytttemagasinet, has been in operation since the mid-1960s and has a lifetime that will cover the operation's needs for the next 20 years. The portion of the operation's tailings that is not refilled in the mine's excavated underground cavities is deposited in the TMF. By managing the depot optimally, we minimise discharges of metals from the operation.



and this is what things look like underground



A CAD drawing of the Garpenberg deposits. The areas marked red are mineral reserves ready to be mined. The grey areas are already mined out, while the brown ones show mineral reserves with future potential. The picture also shows the two new shafts (vertical, red) and the earlier infrastructure (white).



DID YOU KNOW...

EXPLOSIVES contain nitrogen and a proportion of this nitrogen ends up in the minewater, which is then pumped from the mine. Nitrogen can cause eutrophication, but at the Garpenberg purification plant bacteria convert nitrogen residue into nitrogen gas, which is released into the atmosphere. The purified water is then conveyed to the TMF.